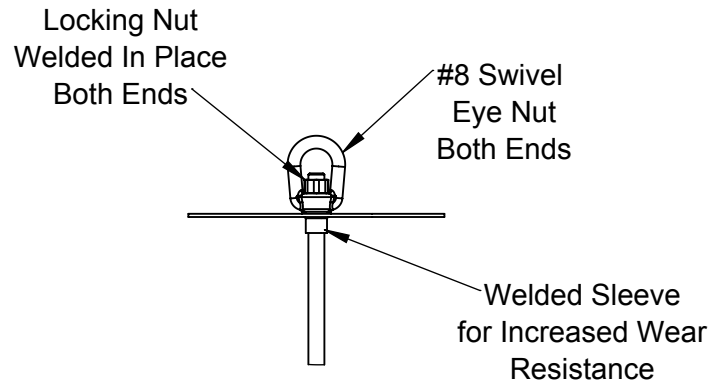
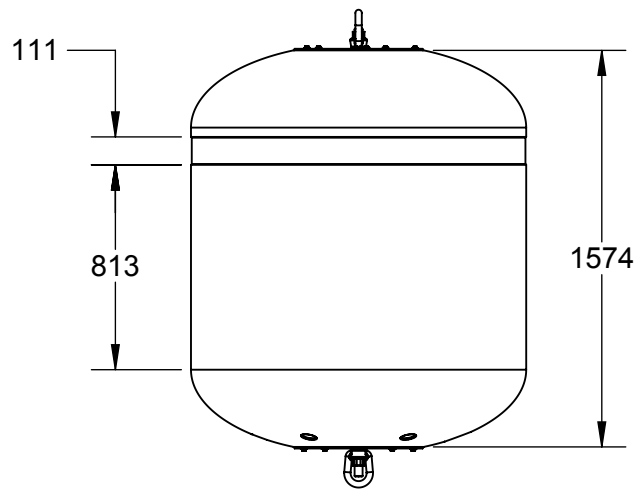
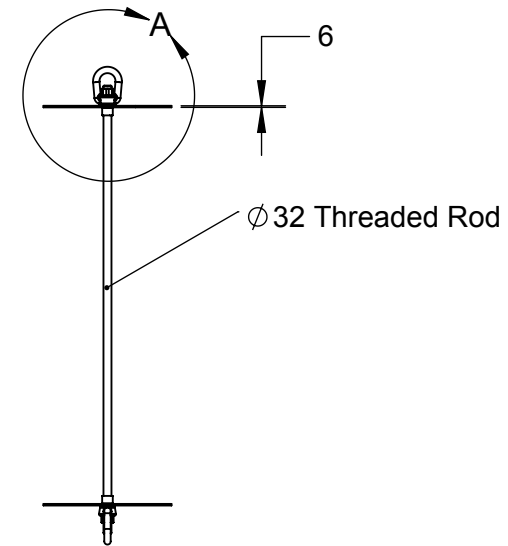
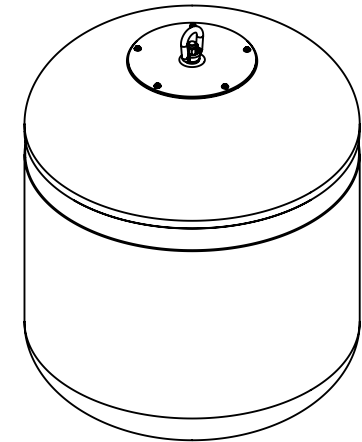


Ø 1344



DETAIL A
SCALE 1 : 15



Notes:

1. Total Displacement Approximately 1850 L
2. EPS Foam Filled

PROPRIETARY AND CONFIDENTIAL

THE INFORMATION CONTAINED IN THIS DRAWING IS THE SOLE PROPERTY OF
NORTHWEST PLASTICS LTD. ANY REPRODUCTION IN PART OR AS A WHOLE
WITHOUT THE WRITTEN PERMISSION OF NORTHWEST PLASTICS LTD IS PROHIBITED.

TIDAL

DO NOT SCALE DRAWING

DRAWN BY	DATE
TK	08/22/16

DIMENSIONS ARE IN
MILLIMETERS

TOLERANCES:
+/- 1.5%

CB 1850 STANDARD ASSEMBLY

SIZE A	DWG. NO. TK-020-001
------------------	------------------------

SCALE:1:30

SHEET 1 OF 1